

# THE PEONY BLOUSE - FREE SEWING PATTERN

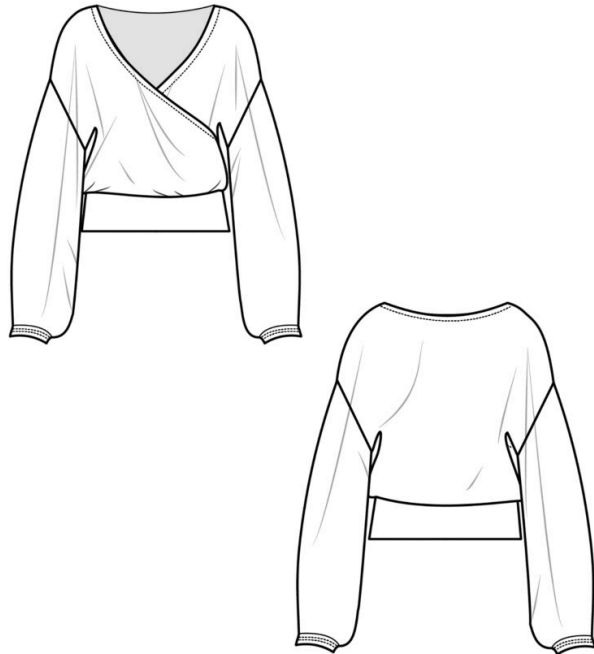
*Posted on September 27, 2019 by Shavonne Cruz*



Imagine sitting in the park on a beautiful Fall day, the air is crisp and you're sipping on a pumkin spice

latte. The trees are putting on a splendid show of their leaves changing colors and you are wearing the perfect blouse worthy of several selfies! The Peony Blouse free sewing pattern is a quick and easy sewing project, allowing you to add a fabulous top to your wardrobe in no time. With a surplice neckline, full sleeves and banded bottom, it provides volume while cinching in your waist for a flattering fit. For my top, I used [Mood's Exclusive print Garden of Earthly Delights in poly crepe](#). It feels amazing and the colors are vibrant and fresh! You could also try using [bamboo](#) or [velour knit](#) as another option. Where do you plan to wear your blouse? Let us know!





## **PURCHASE MATERIALS USED BELOW:**

- 2 yards of [Mood Exclusive Garden of Earthly Delights](#) stretch poly crepe.
- MD0260 – The Peony Blouse Sewing Pattern (free download below!)

## **ALTERNATIVE RECOMMENDED FABRICS:**

- [Velour Knit](#)
- [Rayon Jersey](#)
- [Bamboo Knit](#)



## **DOWNLOAD YOUR FREE PATTERN**

Simply fill in the form below, verify your email address and you'll be sent a link to download your free pattern.

Name

Email

Subscribe & Download

Loading...

All seam allowances are 1/2 unless otherwise stated. See chart below for sizing specifications. Note, this specific pattern is available up to a size 30.

Part / Model	2	4	6	7	8	9	10	12	14	16	18
Neck	12½"	12½"	13"	12½"	13½"	13"	14"	14½"	15"	15½"	16½"
Bust	32½"	33½"	34½"	34½"	35½"	35½"	36½"	38"	39½"	41"	43½"
Waist	24½"	25"	25½"	25"	26½"	26"	27½"	29"	30½"	32"	34½"
Hip	34½"	35"	35½"	36"	36½"	37"	37½"	39"	40½"	42"	45"
Shoulder	4¾"	4 7/16"	5"	4 13/16"	5 1/8"	5"	5¼"	5 7/16"	5 5/8"	5 13/16"	6"
Front Length	13¾"	14"	14¼"	13¾"	14½"	14"	14¾"	15"	15¼"	15½"	15¾"
Back Length	15¾"	16"	16¼"	15¾"	16½"	16"	16¾"	17"	17¼"	17½"	17¾"
Breast Spread	6½"	6¾"	6 7/8"	7"	7"	7 1/8"	7 1/8"	7¼"	7½"	8"	8½"
Back Width	13¼"	13¾"	14"	13 5/8"	14¼"	14"	14½"	14 7/8"	15 1/8"	15½"	16"
	20	22	24	26	28	30					
Neck	17"	17.5"	18"	18.5"	19"	19.5"					
Bust	46"	48.5"	51"	53.5"	56"	58.5"					
Waist	37"	39.5"	42"	44.5"	47"	49.5"					
Hip	48"	51"	54"	57"	60"	63"					
Shoulder	6¼"										
Front Length	16"										
Back Length	18"										
Breast Spread	9½"										
Back Width	16¼"										

### Here's how to sew:

First lay out your pattern pieces to get a visual of how the blouse will look.

Pin your front to your back with wrong sides together because we will be using a French seam to finish our edges. Go ahead and sew together your shoulder seams first.

Next, finish the neckline with a 1/2" rolled hem before sewing the side seams.

Now, finish your sides seams with a French seam and set aside.

Next, sew in the darts on your your sleeve at the cuff opening. Press the darts once done.

Now fold the sleeve and stitch the underarm seam using a French seam.

Attach the cuff and insert a small strip of elastic before top stitching closed.

Set in your sleeves, stitch in place and press.

The last thing to do is attach your waistband. Before doing that, using a basting stitch, stitch along the bottom edge and slightly gather the waist.

Now pin your waistband to the bottom opening of your blouse and stitch. Top stitch along the inside of the waistband and press.

That's it! You're done!



