



#MoodKiriPattern

“The Kiri Dress”

Sizes 0/2 to 28/30

For sewing instructions visit the MoodSewciety.com blog and type “Kiri Pattern” in the search bar.

All seam allowances (SA) included.
Main seams: 1/2”
Collar, neckline, cuff edges: 3/8”
Sleeve slit: 1/4”

We love creating these free patterns for the community and we want to keep them free! In return, we hope you check out MoodFabrics.com for your next project!

Want to use one of our patterns to make a garment to sell? Our patterns are royalty-free! We just ask that you credit us with MoodSewciety.com or MoodFabrics.com in your product description.

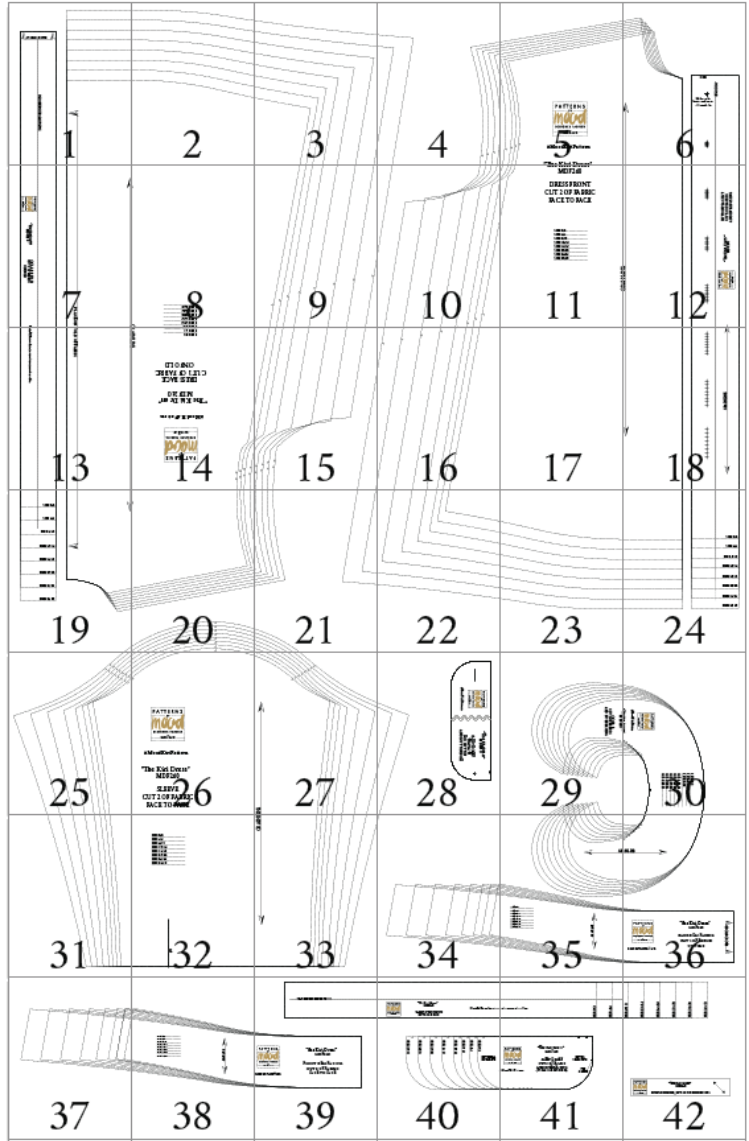
♥ The Mood Sewciety Team

mood SEWCİETY

©2021 MoodFabrics.com / MoodSewciety.com
Mass production, resale, or distribution of this pattern in any form is strictly prohibited.

● Stop!

Print just this page first to check accuracy. The Mood square to the left should measure 2 inches. Print “actual size” (no scaling).



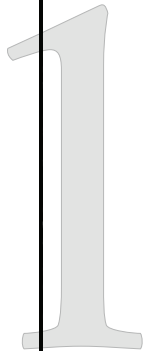
DEVELOPMENT SERVICES BY **PaTternHack.com**



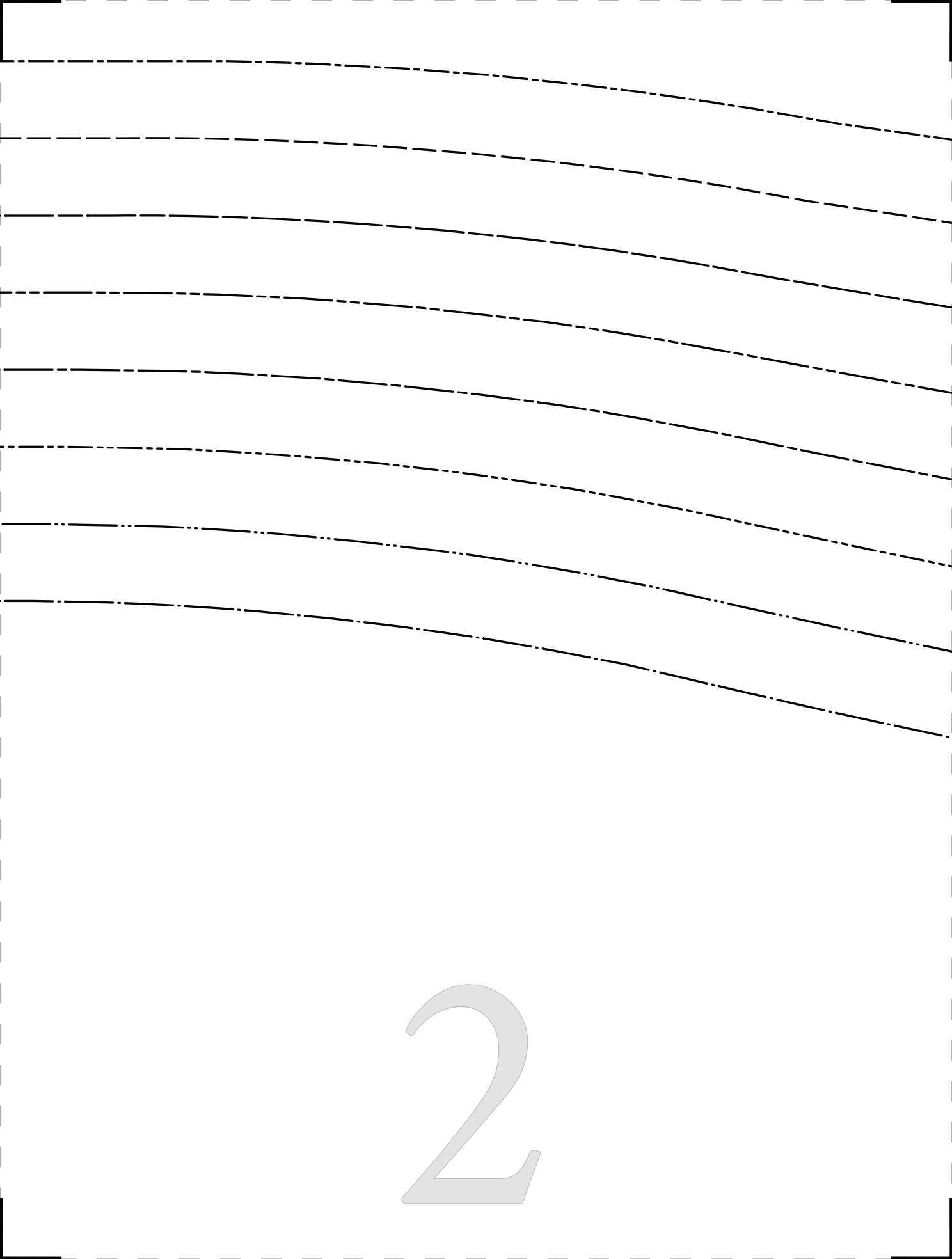
PLACE ON FOLD



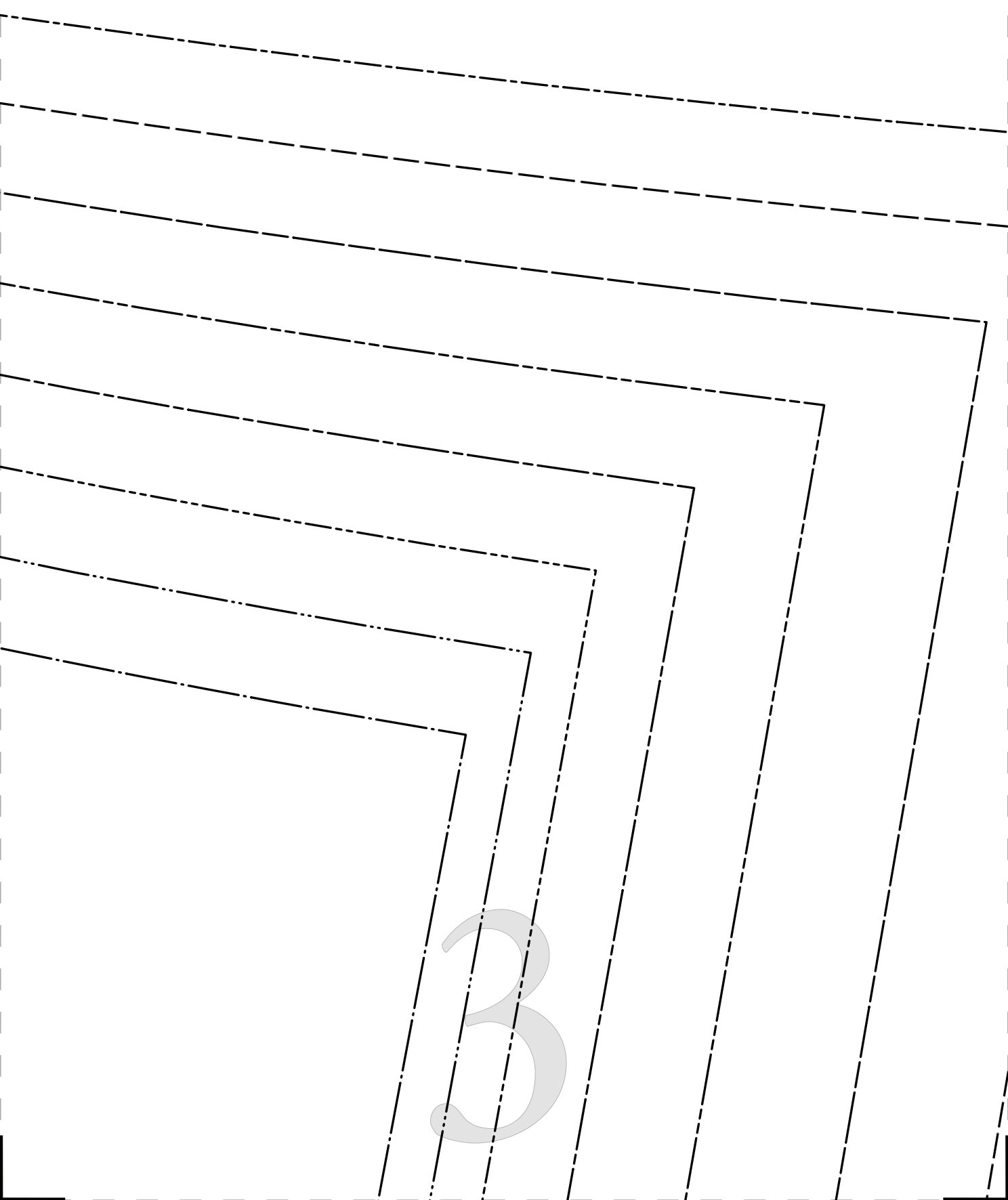
FOLD HERE FOR EDGE OF RUFFLE



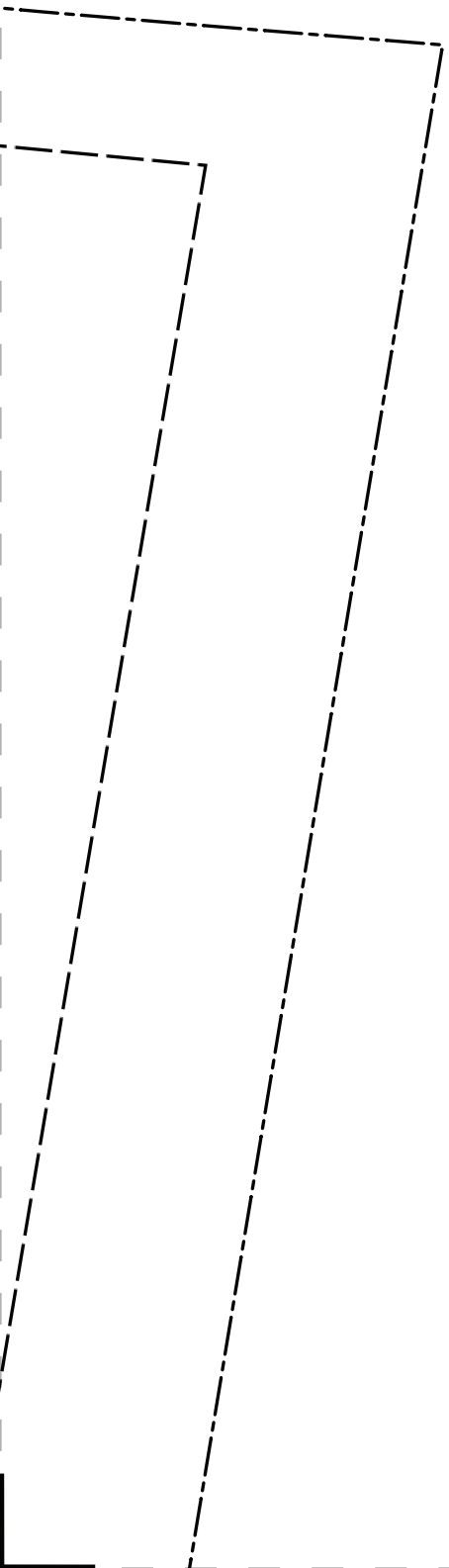
Handwriting practice lines consisting of a solid top line, a dashed middle line, and a solid bottom line. The page contains seven such sets of lines.



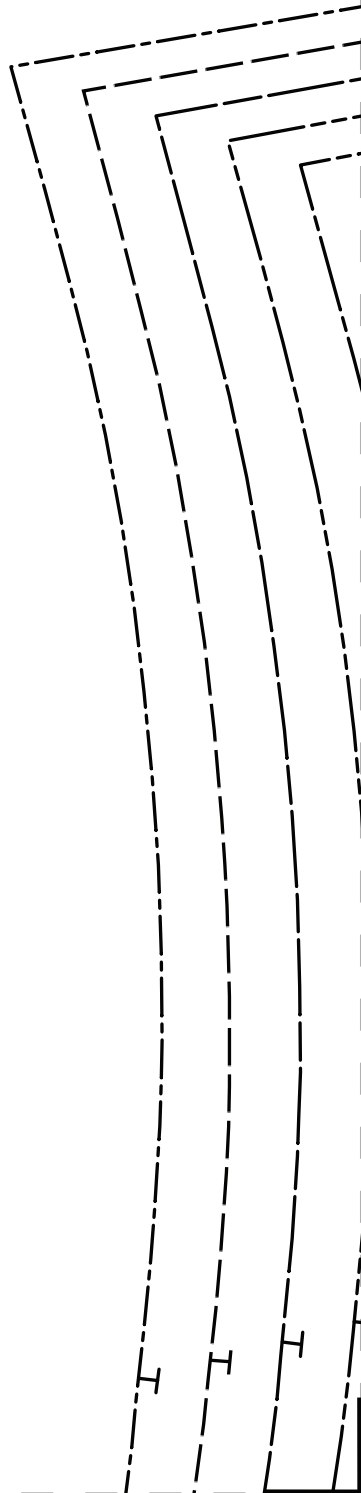
2

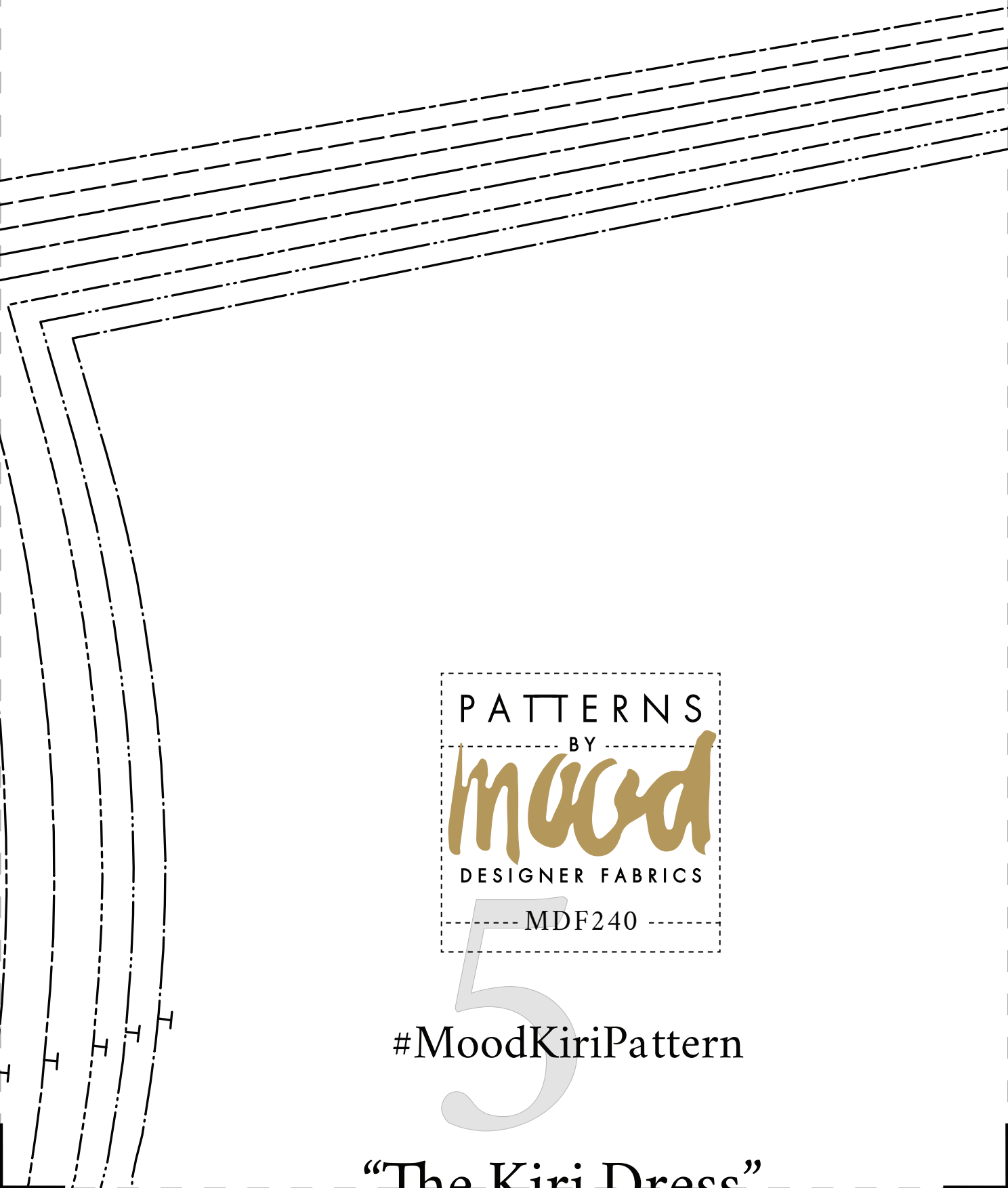


3



4

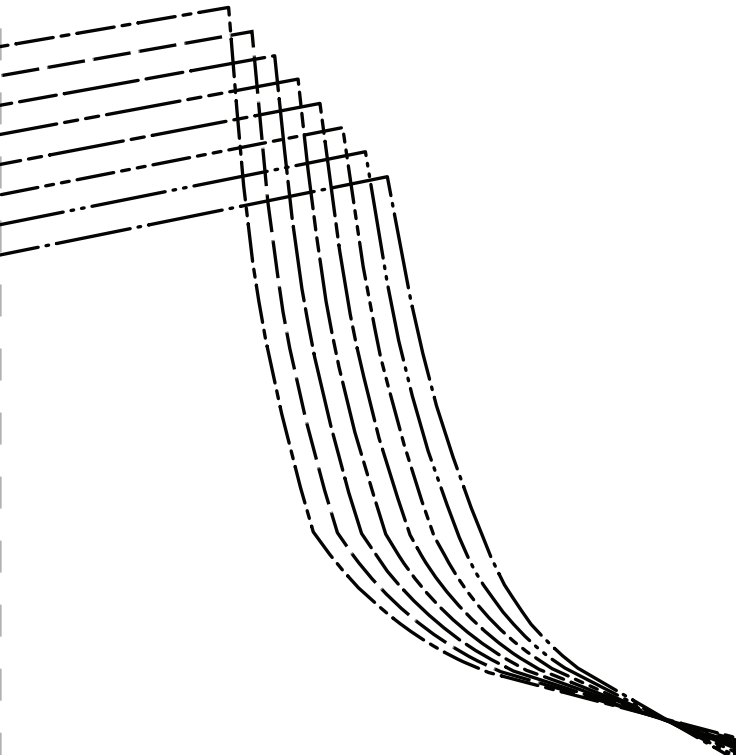




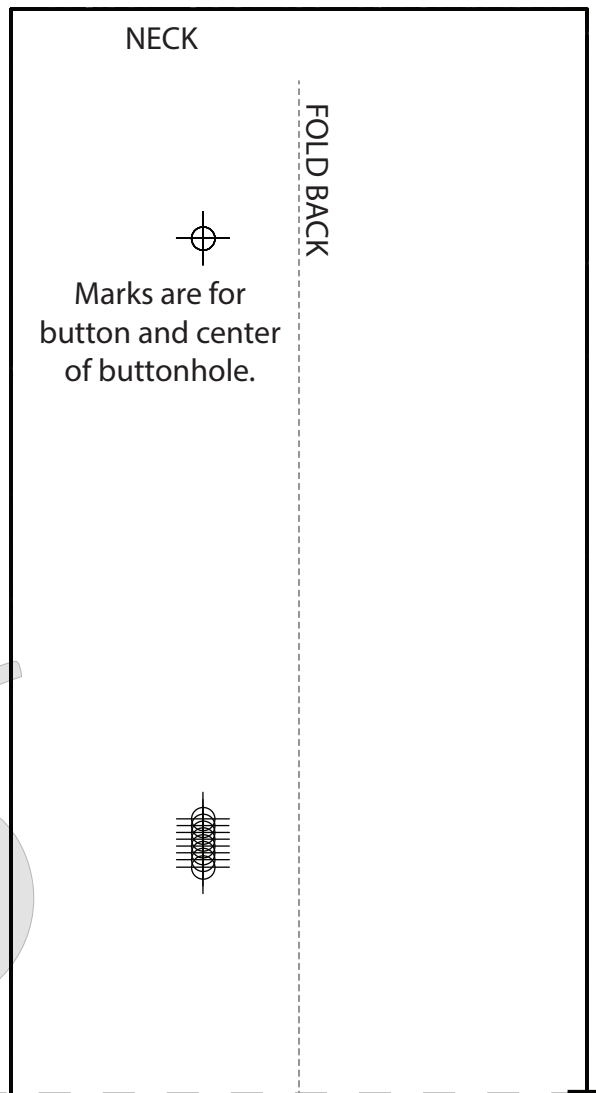
PATTERNS
BY
mood
DESIGNER FABRICS
MDF240

#MoodKiriPattern

“The Kiri Dress”



6

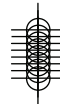


NECK

FOLD BACK



Marks are for
button and center
of buttonhole.





“The Kiri Dress”
MDF240

COLLAR RUFFLE
CUT 1 OF FABRIC
ON FOLD

PLACE ON

SIZE 8/10

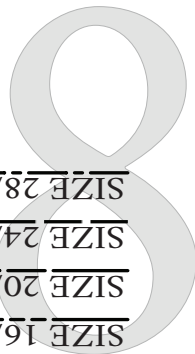
SIZE 12/14

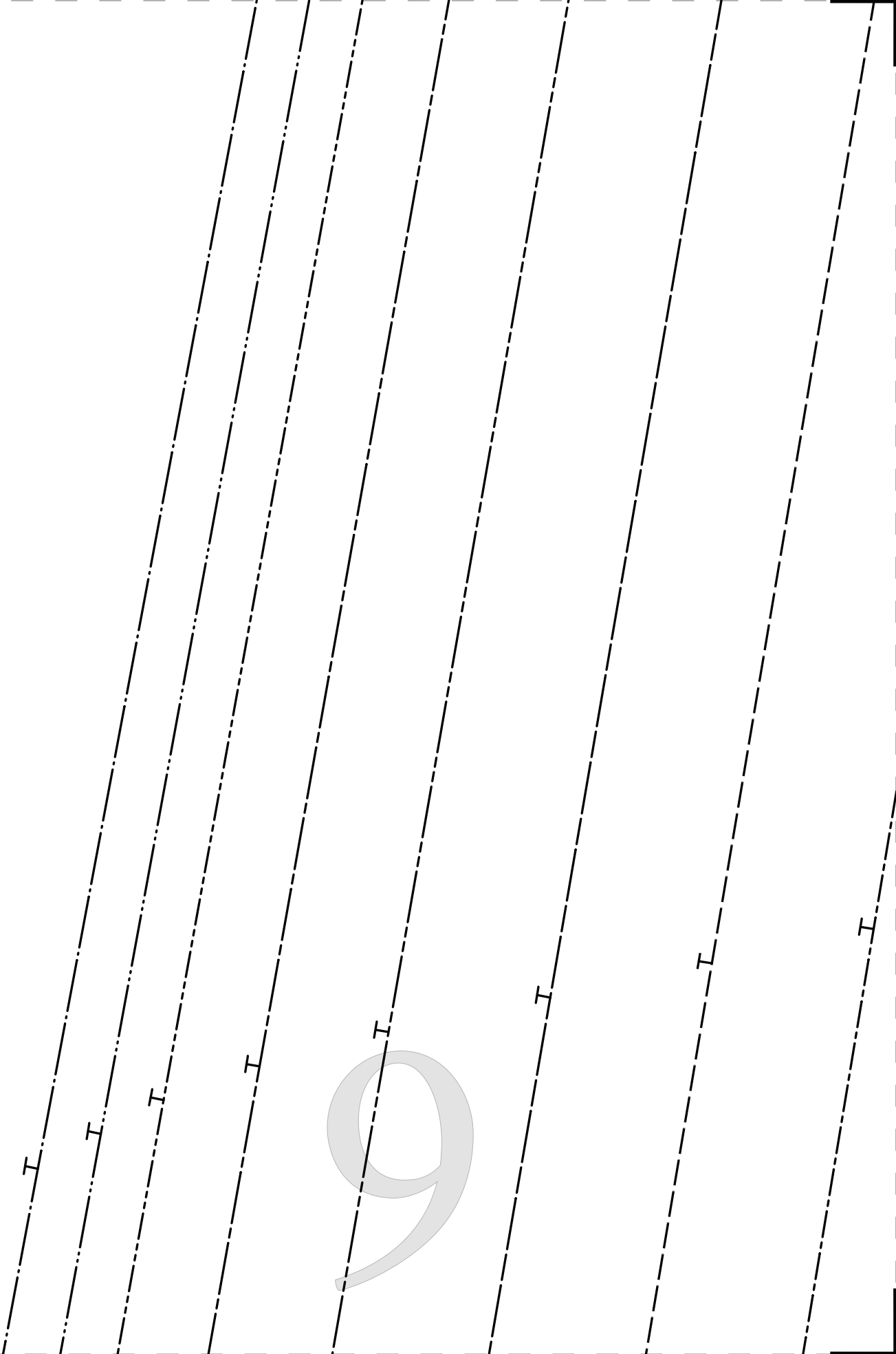
SIZE 16/18

SIZE 20/22

SIZE 24/26

SIZE 28/30





10

I

I

I

THE KIP DRESS
MDF240

DRESS FRONT
CUT 2 OF FABRIC
FACE TO FACE

SIZE 0/2 _____

SIZE 4/6 _____

SIZE 8/10 _____

SIZE 12/14 _____

SIZE 16/18 _____

SIZE 20/22 _____

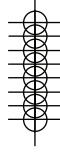
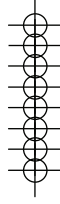
SIZE 24/26 _____

SIZE 28/30 _____

1 1

1

2



PATTERNS
BY
maeva
DESIGNER FABRICS
— MDF240 —

“The Kiri Dress”
MDF240

BUTTON PLACKET
CUT 2 OF FABRIC
AND INTERFACING

FOLD OF FABRIC

13

Note: Ruffle can be cut on-grain, cross-grain, or bias.

SIZE 4/6
SIZE 0/2

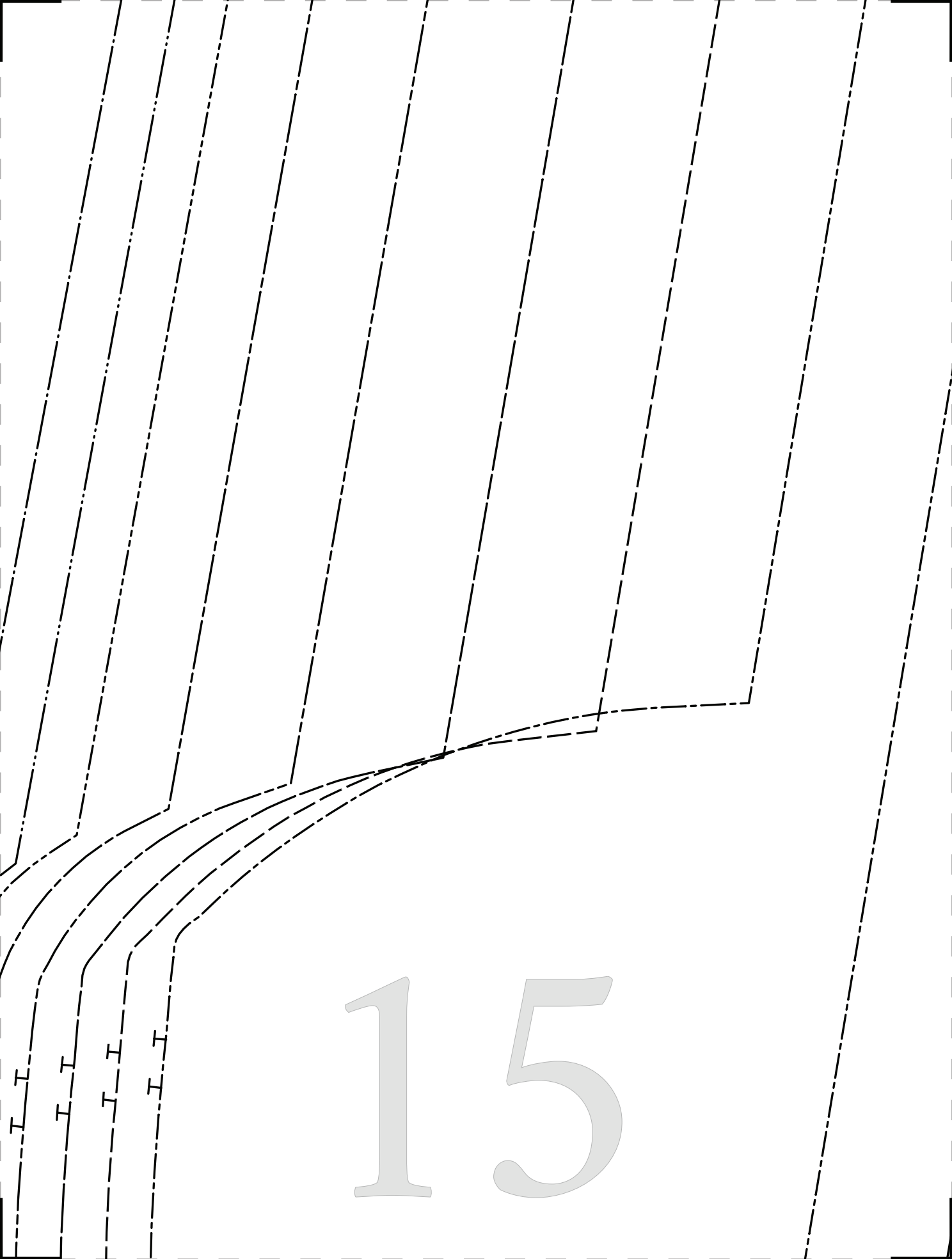
ON FOLD
CUT 1 OF FABRIC
DRESS BACK
MDF240
"The Kiri Dress"

#MoodKiriPattern

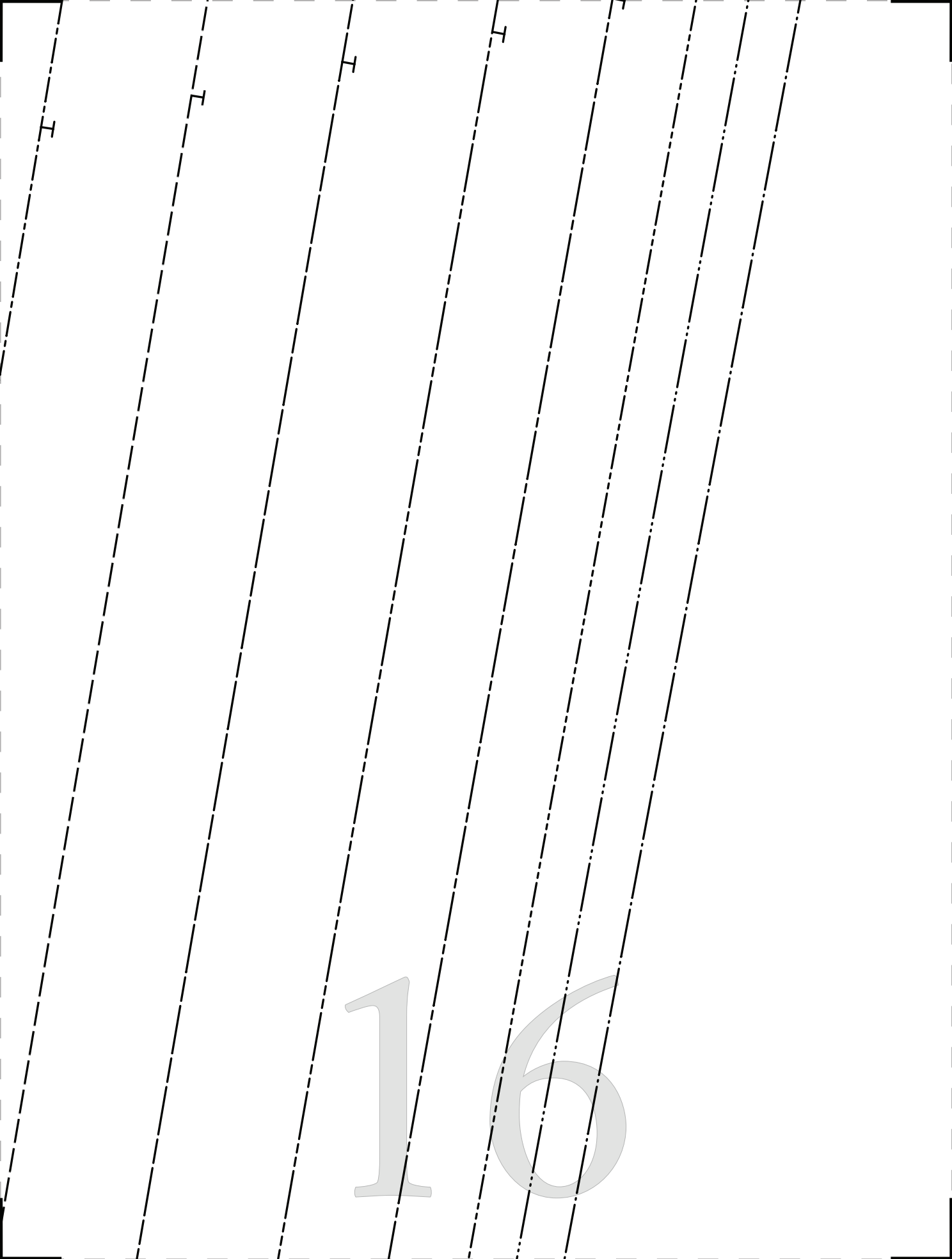


14





15



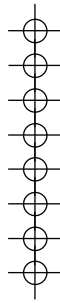
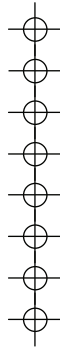
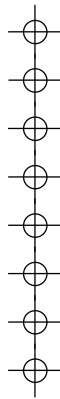
16

17



1

8



GRAINLINE



SIZE 0/2

SIZE 4/6

SIZE 8/10

SIZE 12/14

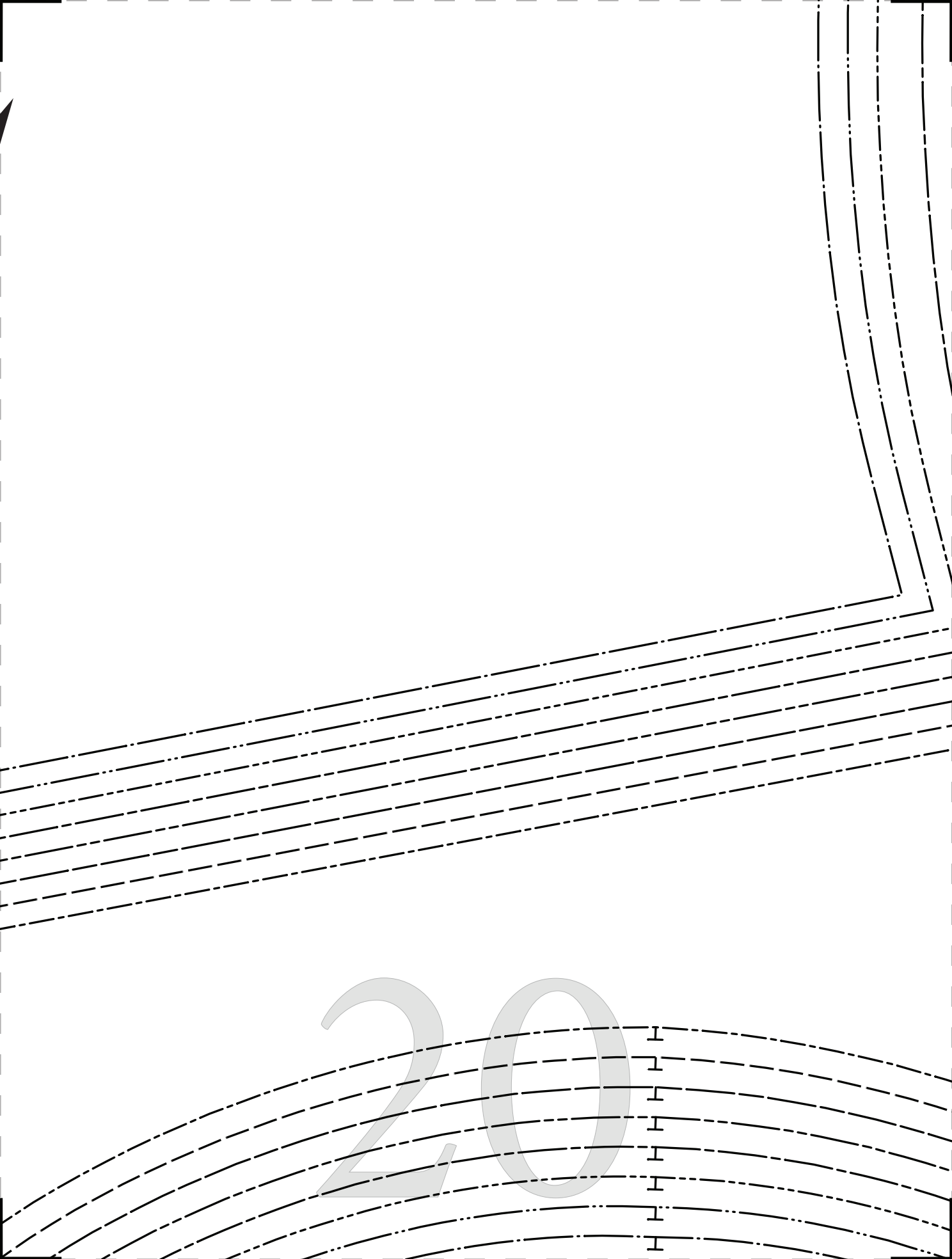
SIZE 16/18

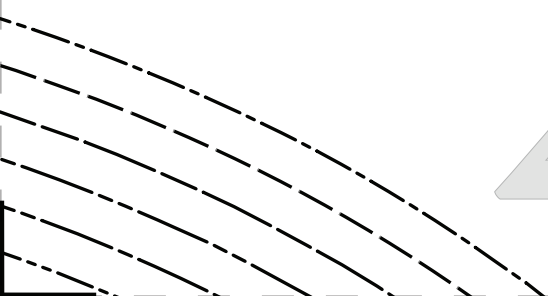
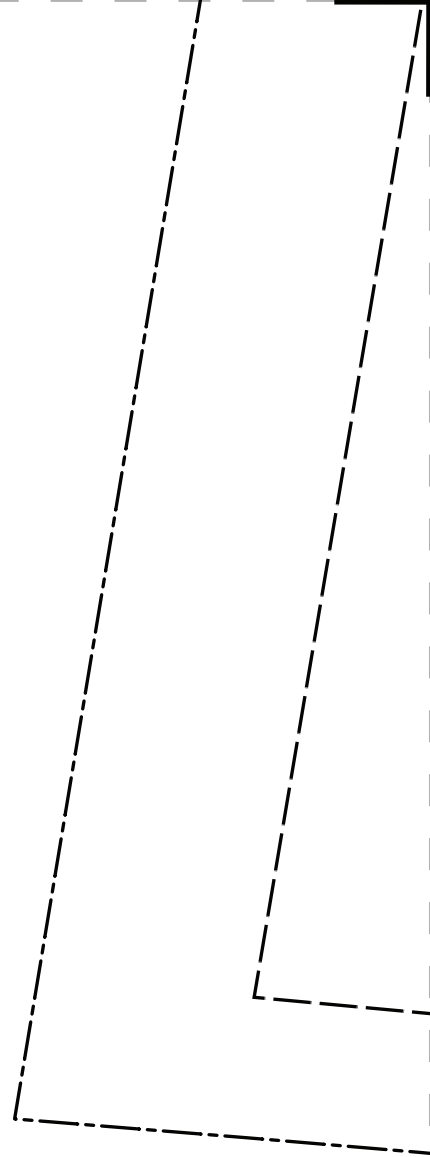
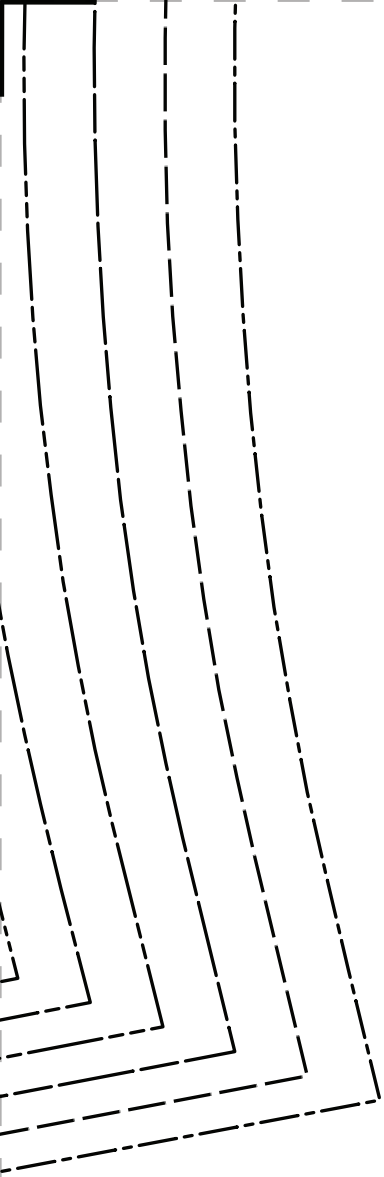
SIZE 20/22

SIZE 24/26

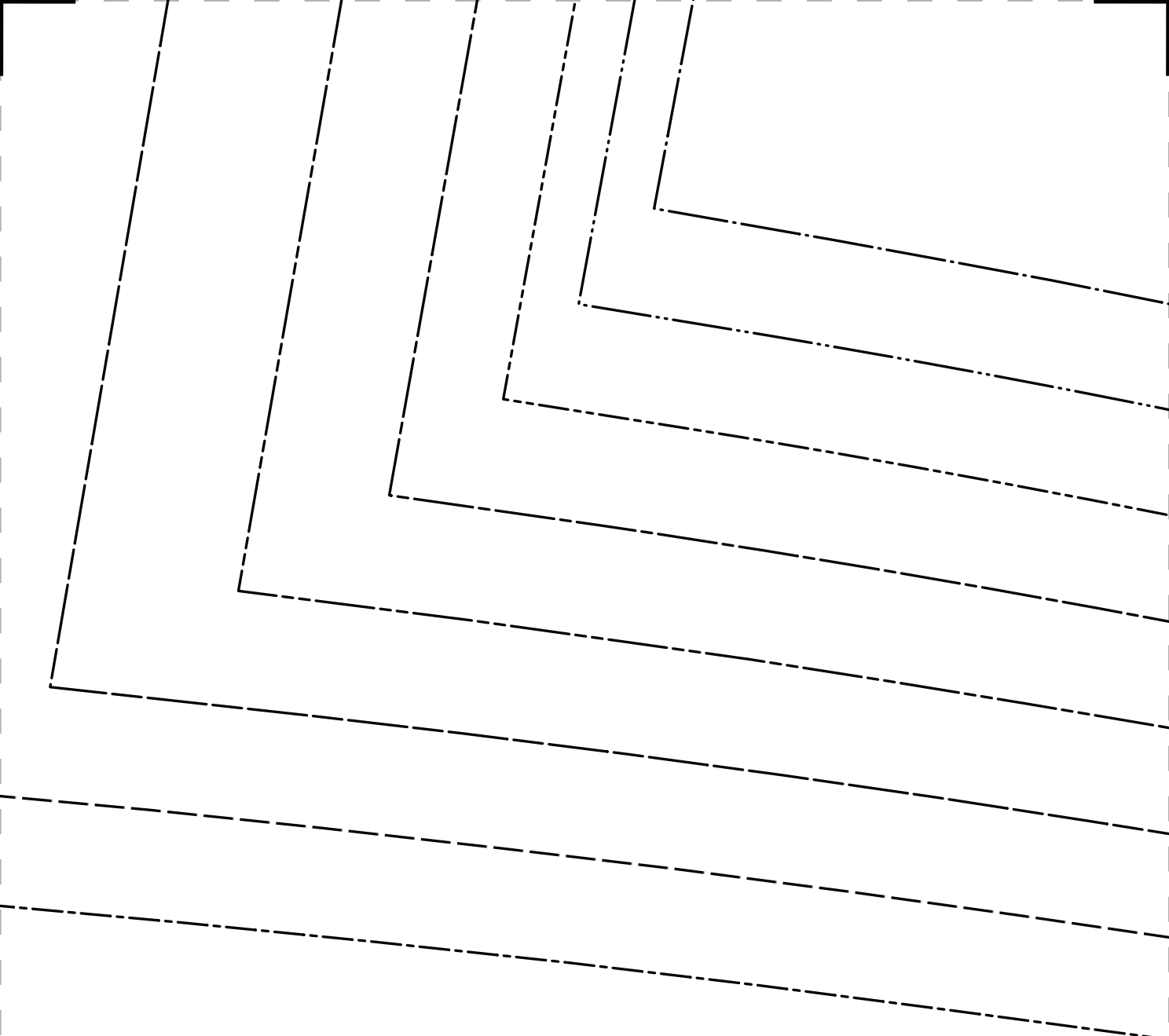
SIZE 28/30

19

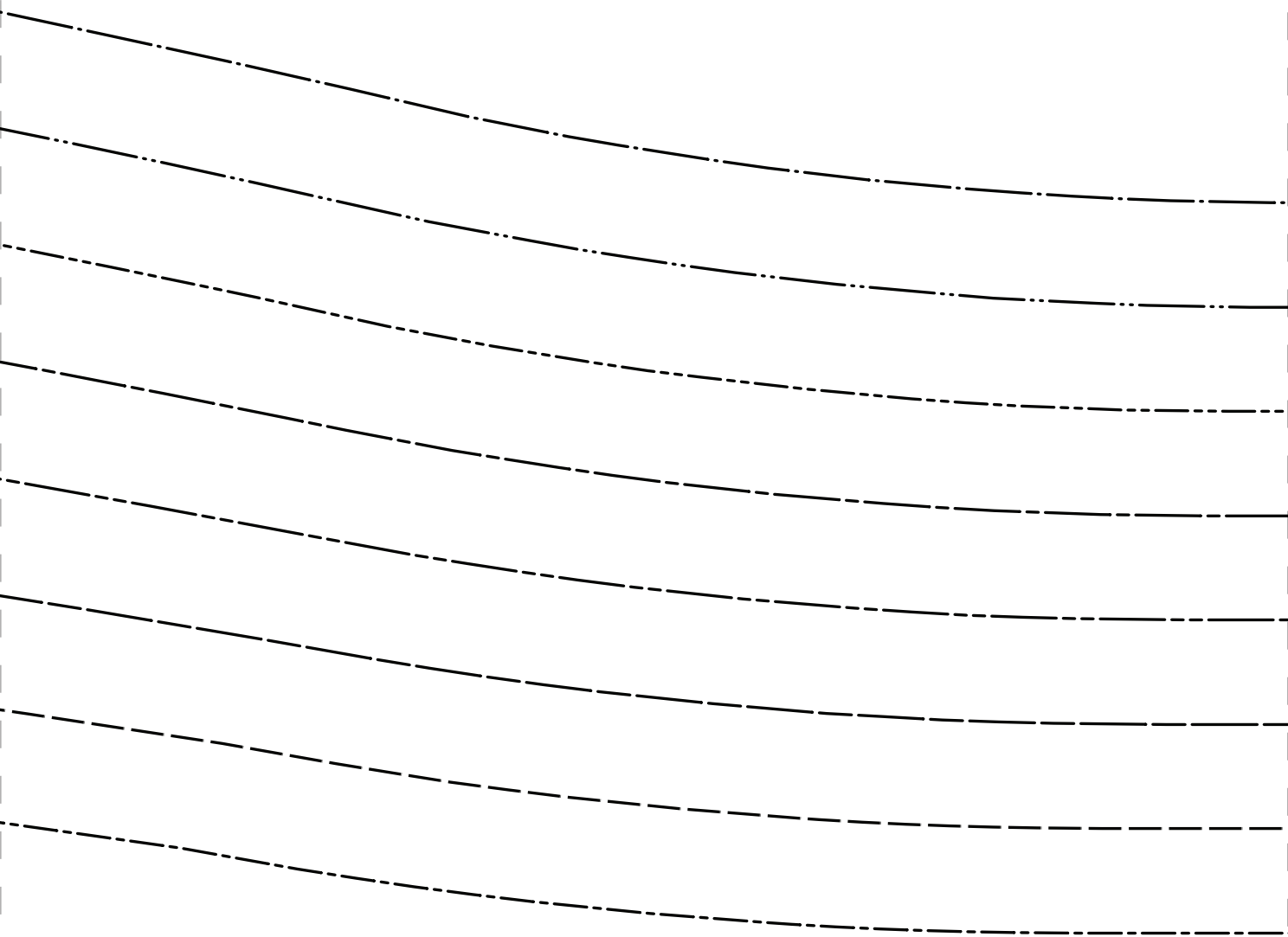




21



22

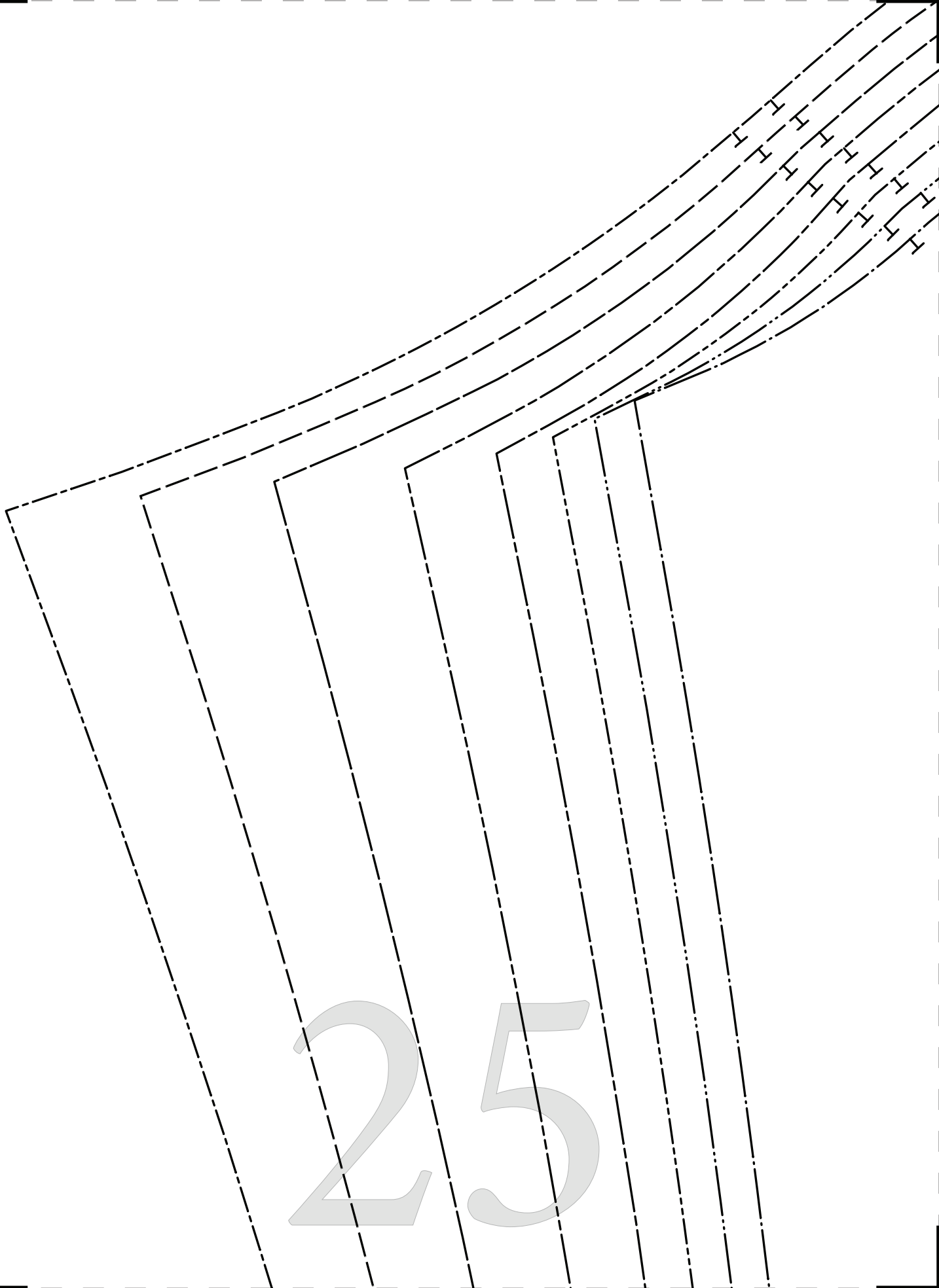


23

	SIZE 0/2
	SIZE 4/6
	SIZE 8/10
	SIZE 12/14
	SIZE 16/18
	SIZE 20/22
	SIZE 24/26
	SIZE 28/30

24

25





#MoodKiriPattern

“The Kiri Dress”
MDF240

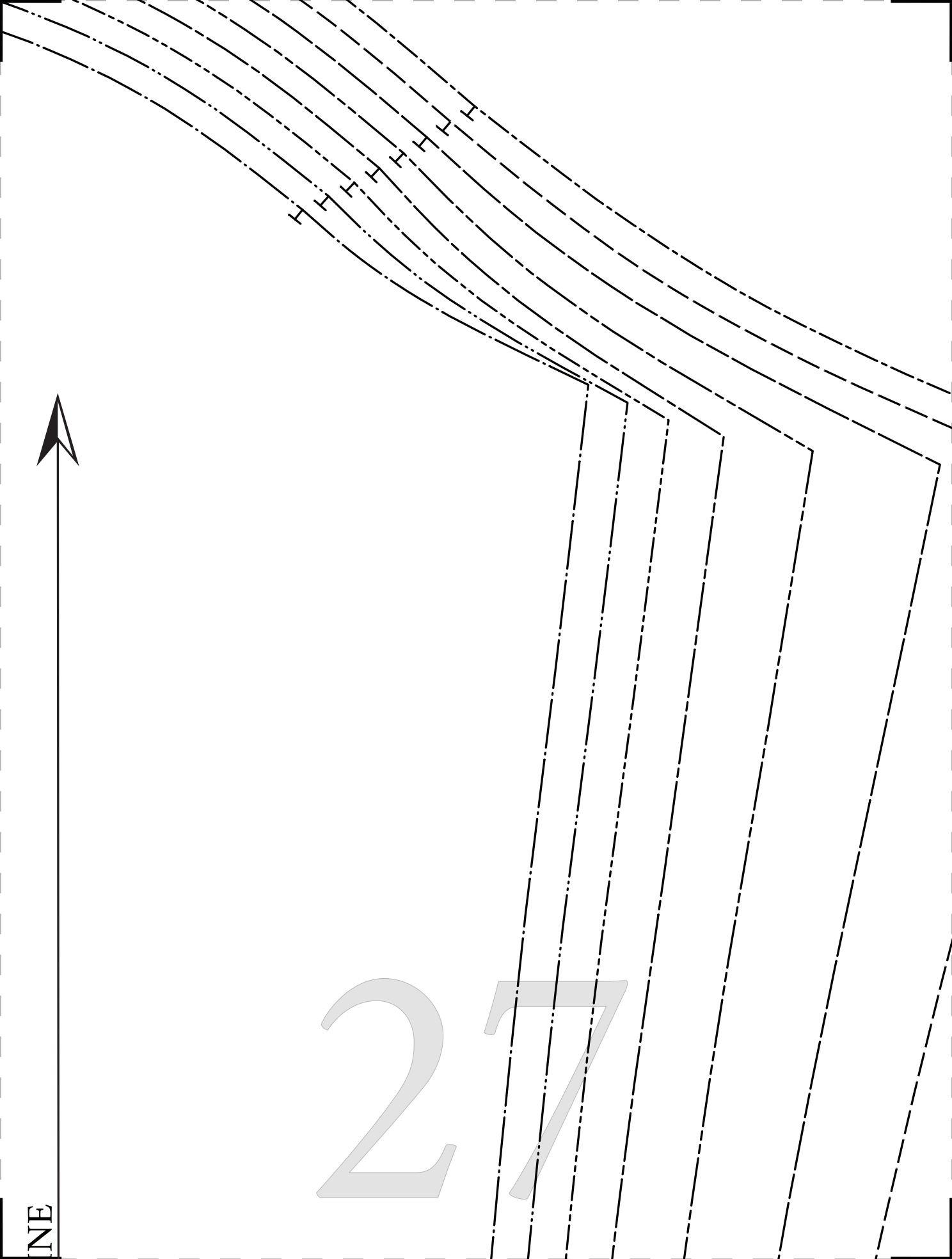
SLEEVE
CUT 2 OF FABRIC
FACE TO FACE

26

LINE

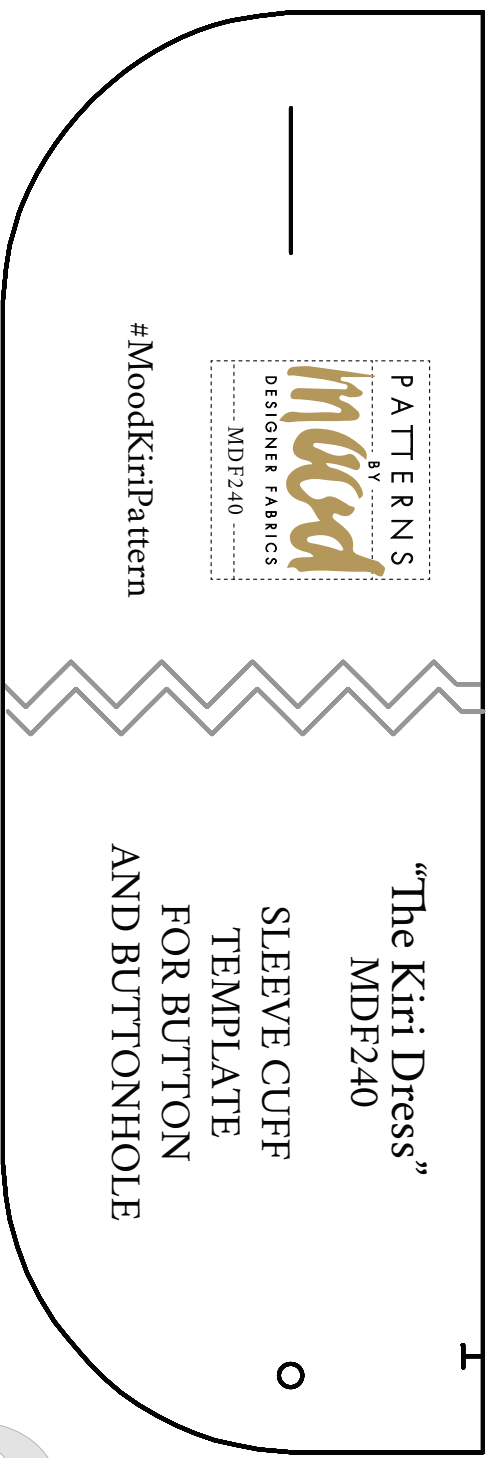


27





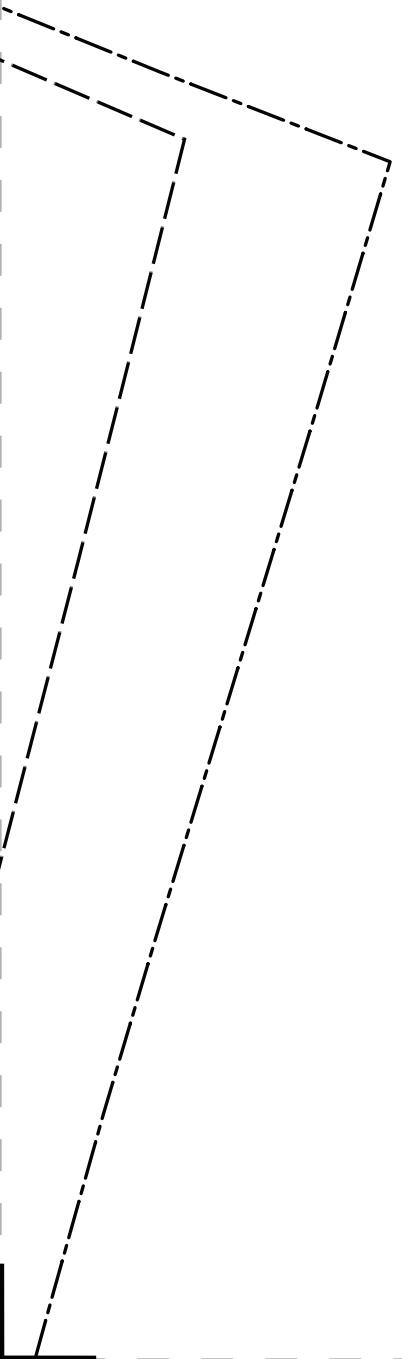
#MoodKiriPattern



“The Kiri Dress”
MDF240

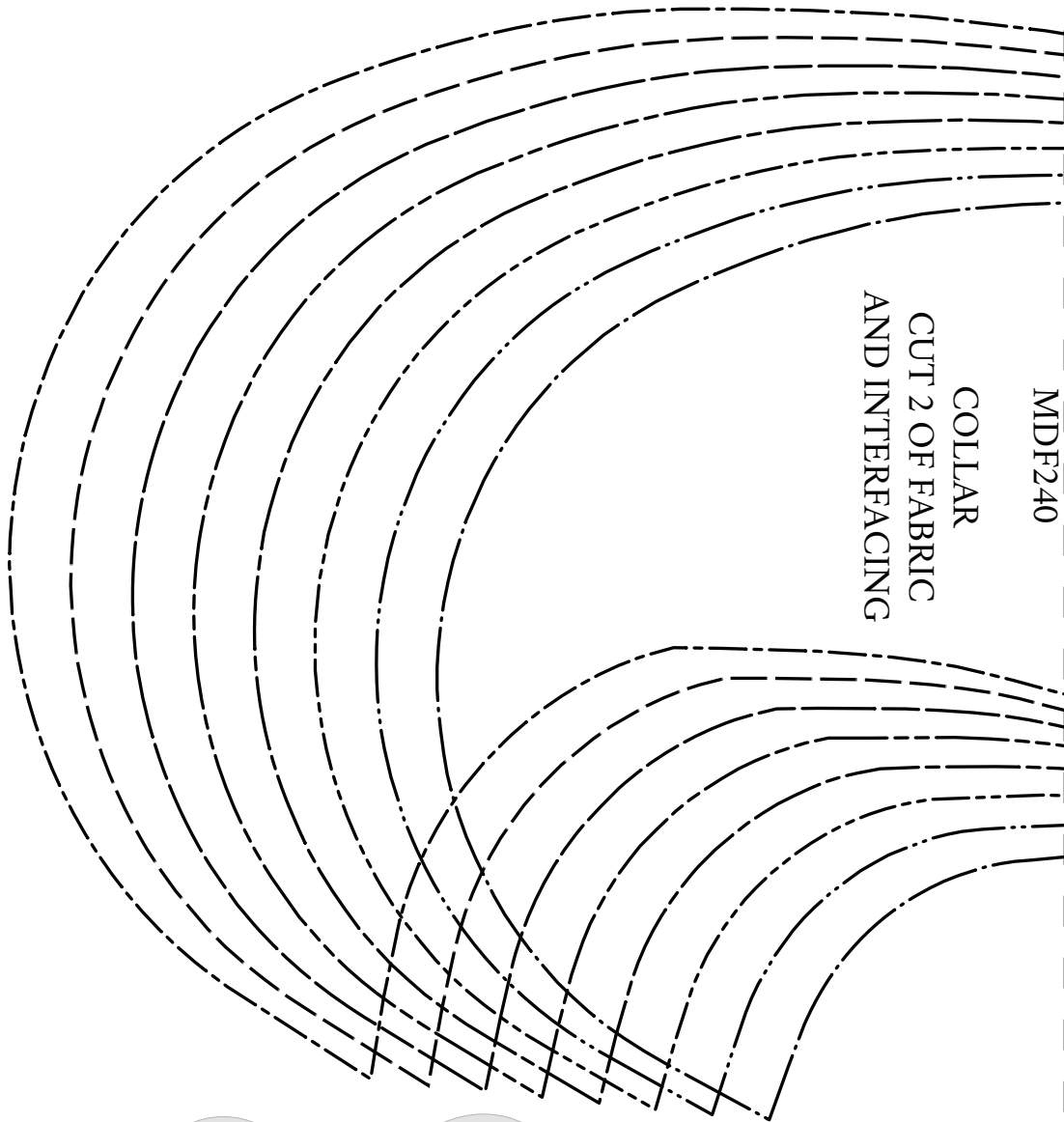
SLEEVE CUFF
TEMPLATE
FOR BUTTON
AND BUTTONHOLE

28

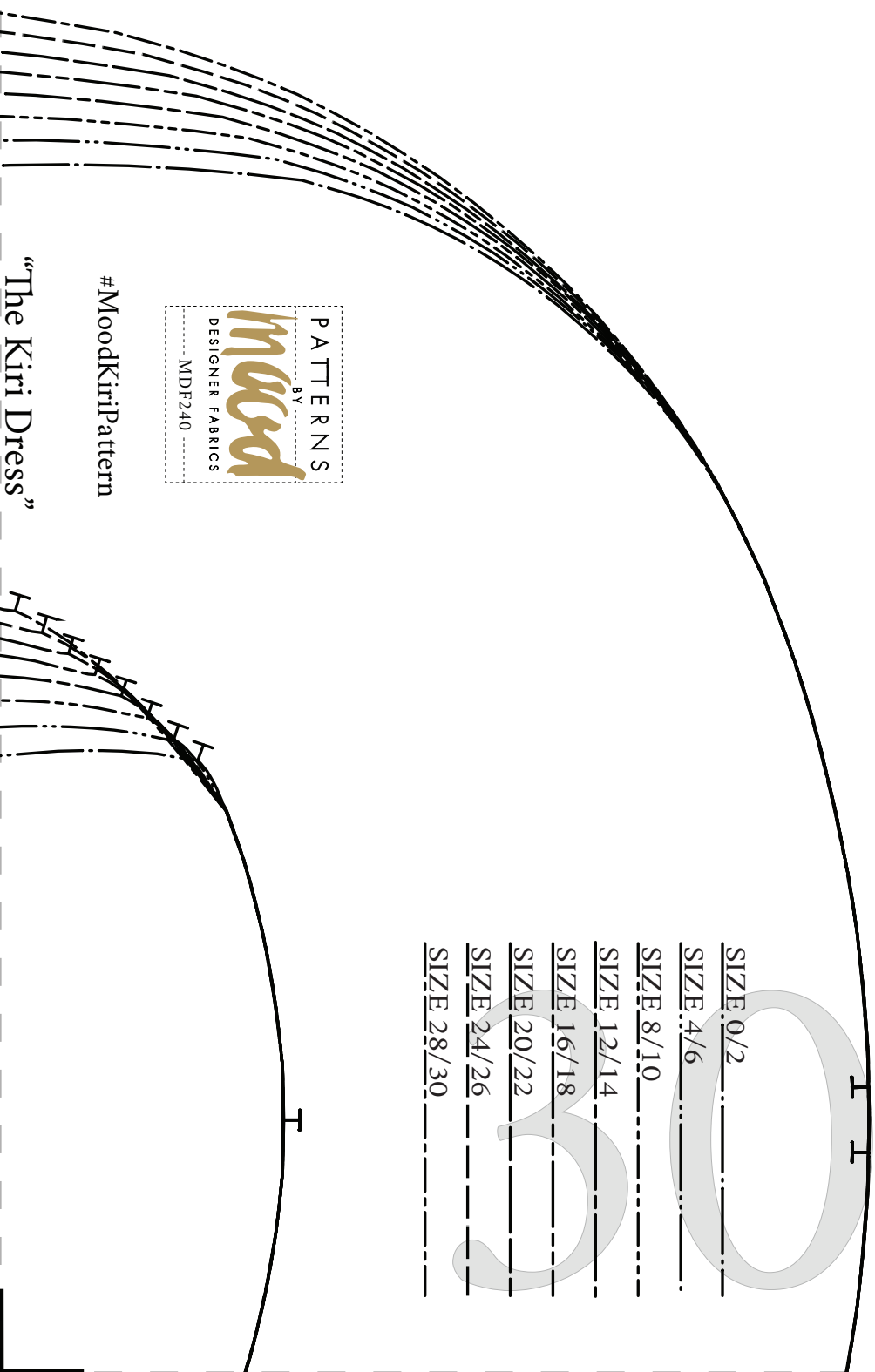


MDF240

COLLAR
CUT 2 OF FABRIC
AND INTERFACING



29



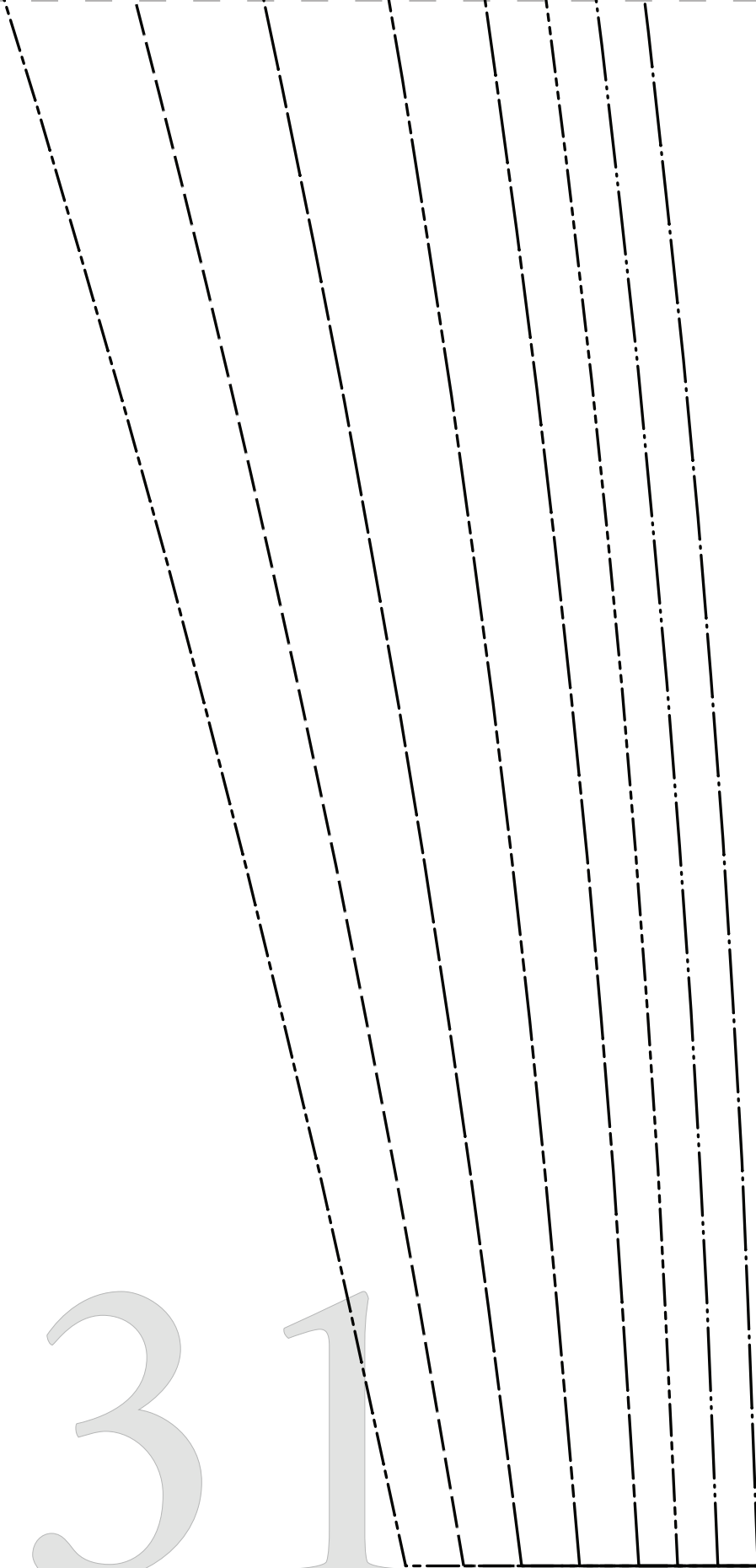
PATTERNS
BY
mood
DESIGNER FABRICS
MDF240

#MoodKiriPattern

“The Kiri Dress”

- SIZE 0/2
- SIZE 4/6
- SIZE 8/10
- SIZE 12/14
- SIZE 16/18
- SIZE 20/22
- SIZE 24/26
- SIZE 28/30

3 1



SIZE 0/2

SIZE 4/6

SIZE 8/10

SIZE 12/14

SIZE 16/18

SIZE 20/22

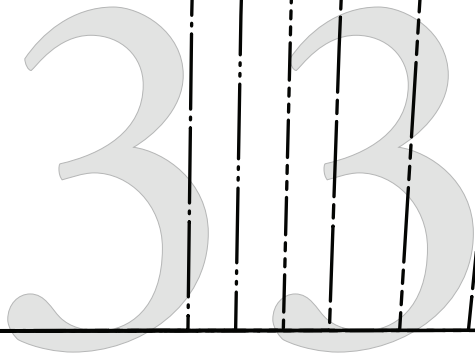
SIZE 24/26

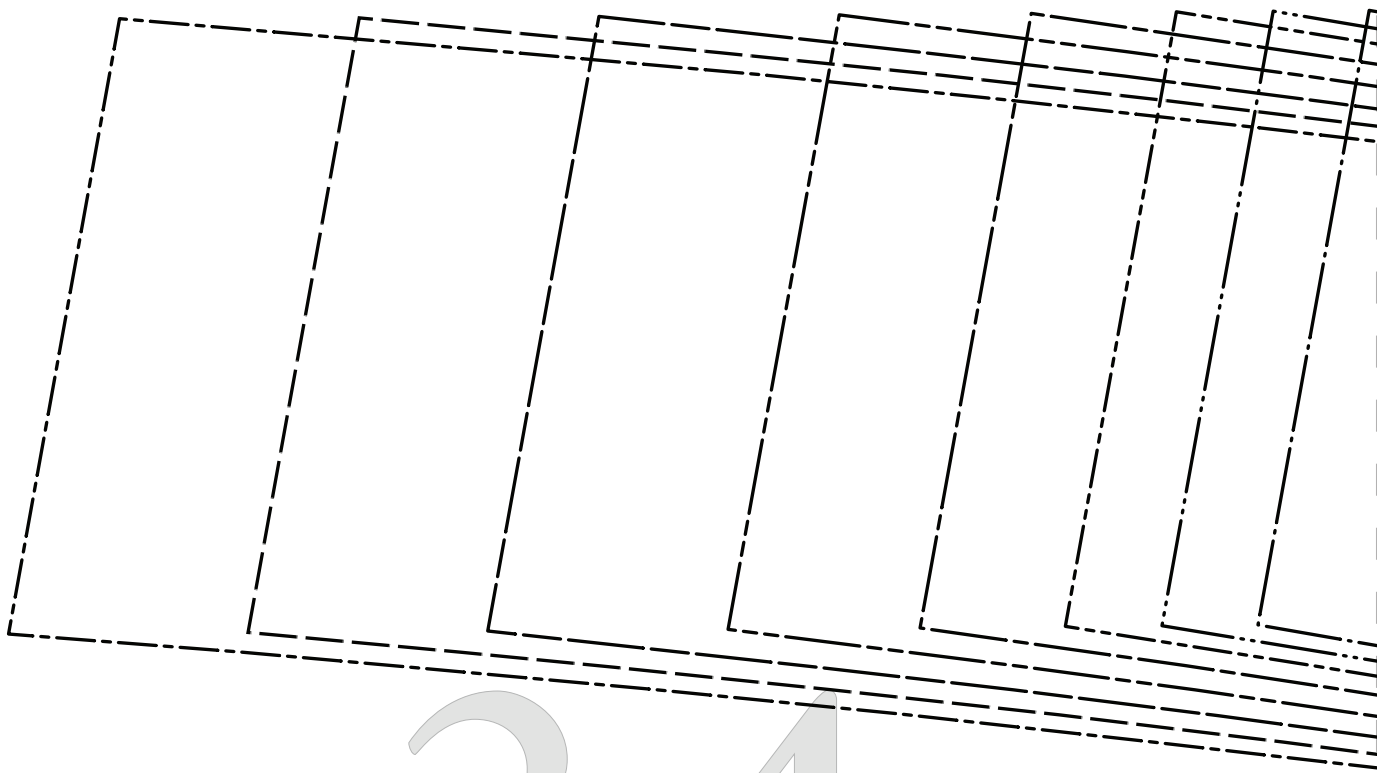
SIZE 28/30

SLIT

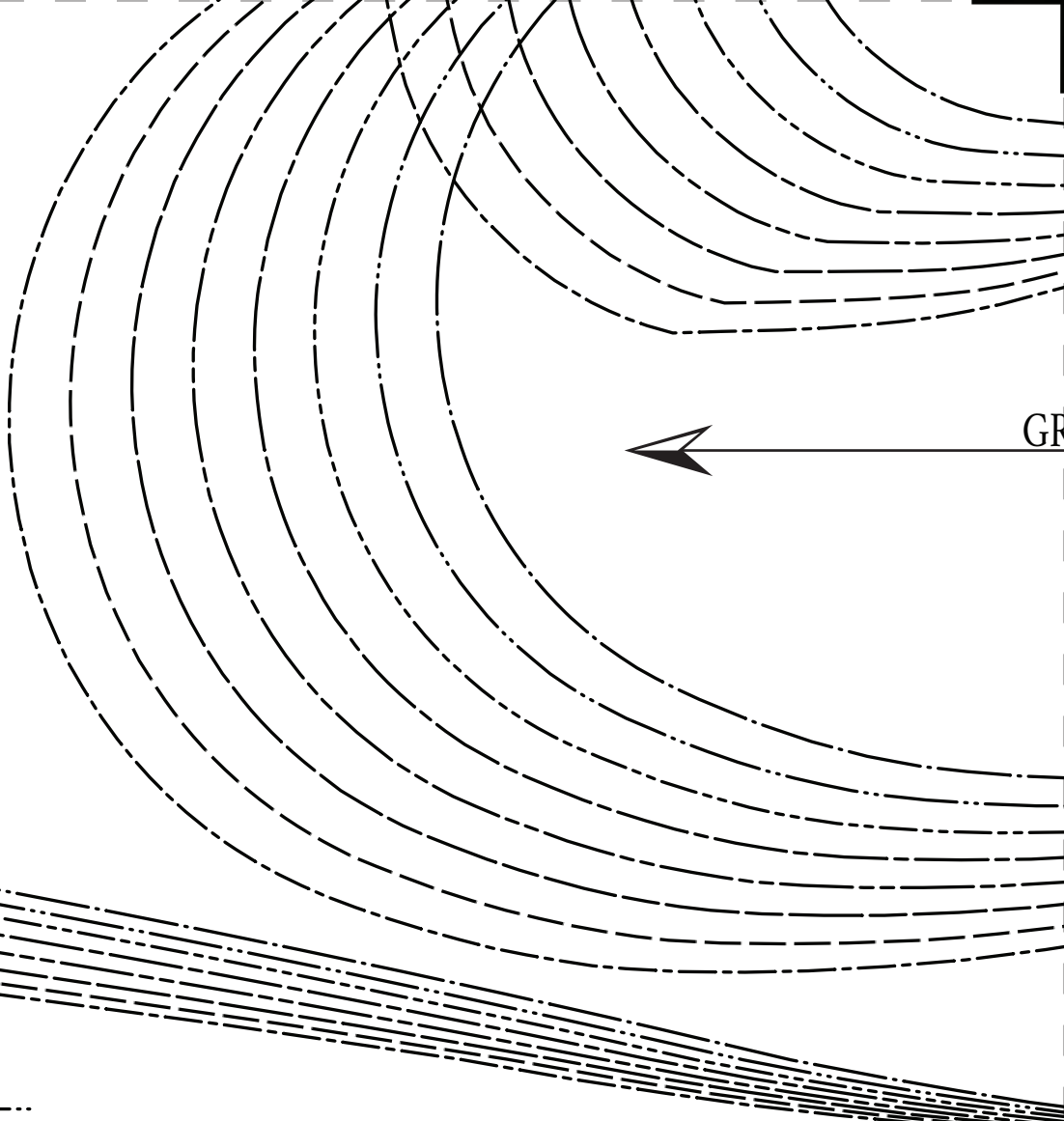
32

GRAINL





34



- SIZE 0/2 _____
- SIZE 4/6 _____
- SIZE 8/10 _____
- SIZE 12/14 _____
- SIZE 16/18 _____
- SIZE 20/22 _____
- SIZE 24/26 _____
- SIZE 28/30 _____



35

RAINLINE



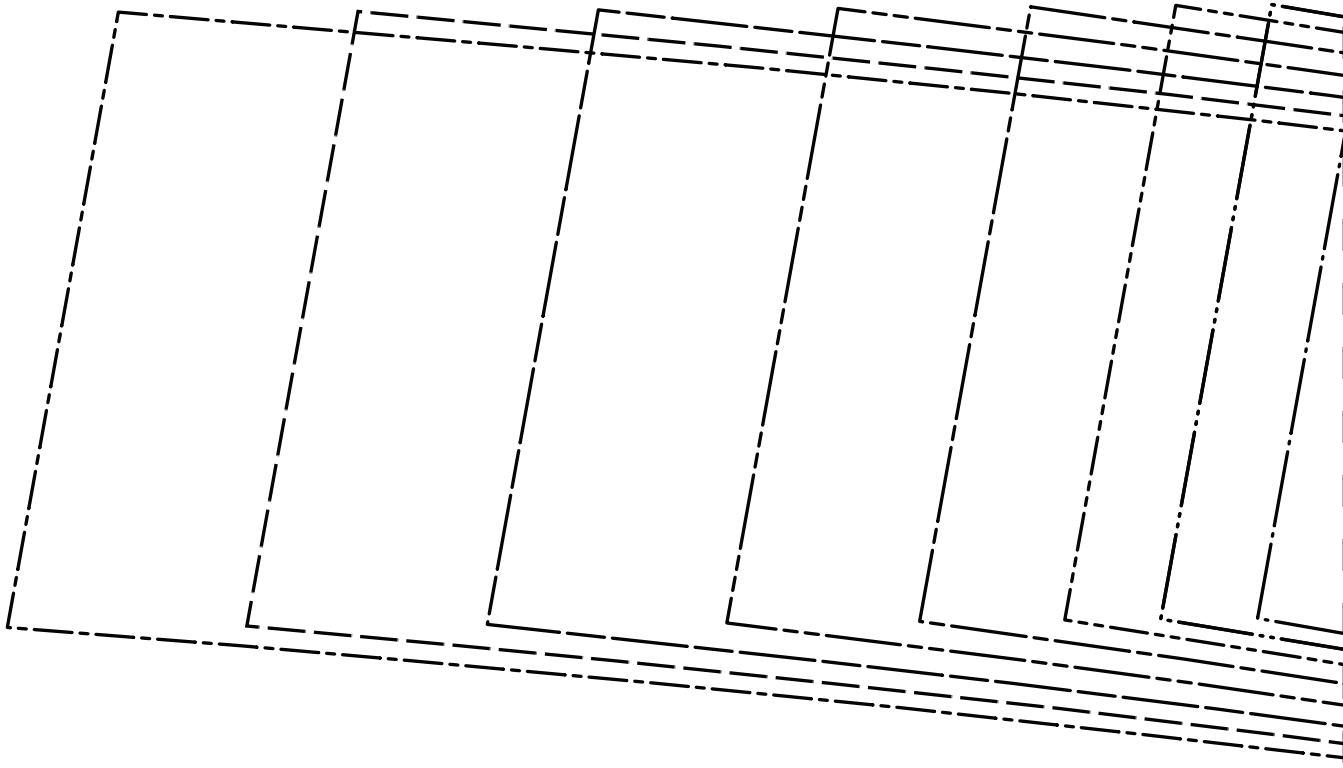
#MoodKiriPattern

“The Kiri Dress”
MDF240

BACK HEM FACING
CUT 1 OF FABRIC
ON FOLD



36



37

SIZE 0/2
SIZE 4/6
SIZE 8/10
SIZE 12/14
SIZE 16/18
SIZE 20/22
SIZE 24/26
SIZE 28/30



38

FOLD HERE FOR EDGE OF RUFFLE



“The Kiri Dress”
MDF240

FRONT HEM FACING
CUT 2 OF FABRIC
FACE TO FACE

#MoodKiriPattern

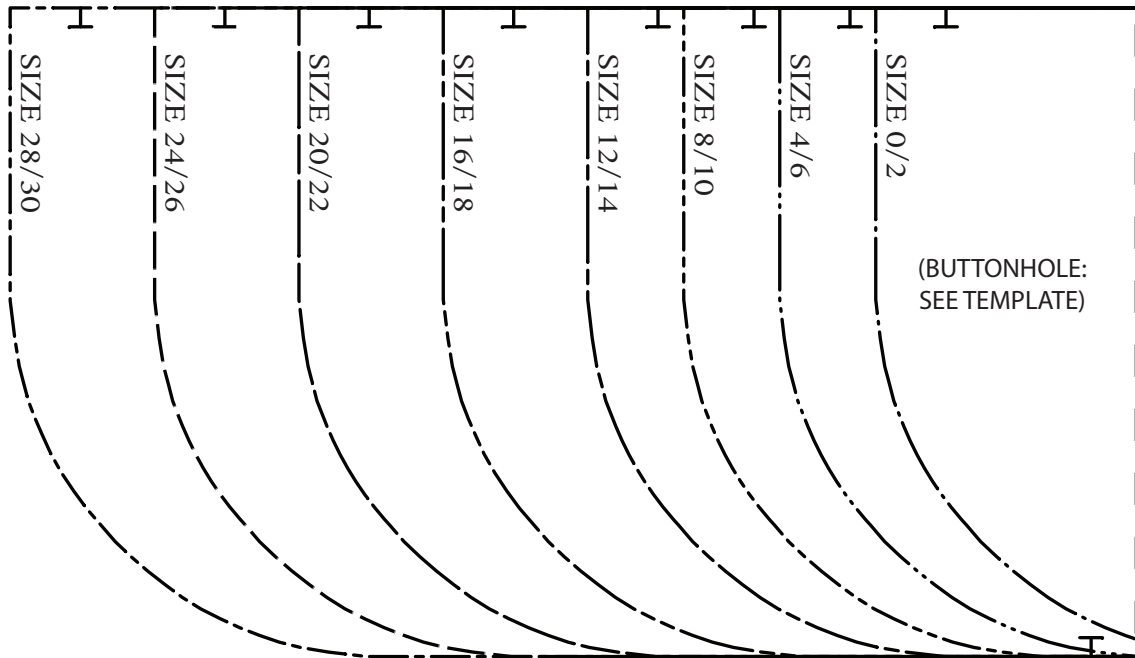
39



“The Kiri Dress”
MDF240

SLEEVE CUFF RUFFLE
CUT 2 OF FABRIC

Note: Ruffle can be cut on



40

grain, cross-grain, or bias.

SIZE 0/2

SIZE 4/6



“The Kiri Dress”
MDF240

SLEEVE CUFF
CUT 4 OF FABRIC
AND INTERFACING
(TWO-PAIR FACE TO FACE)

(BUTTON:
SEE TEMPLATE)

STOP
GATHERS

#MoodKiriPattern

41

SIZE 8/10

SIZE 12/14

SIZE 16/18

SIZE 20/22

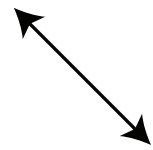
SIZE 24/26

SIZE 28/30



"The Kiri Dress"
MDF240

SLEEVE BINDING, CUT 2 OF FABRIC ON BIAS



42